

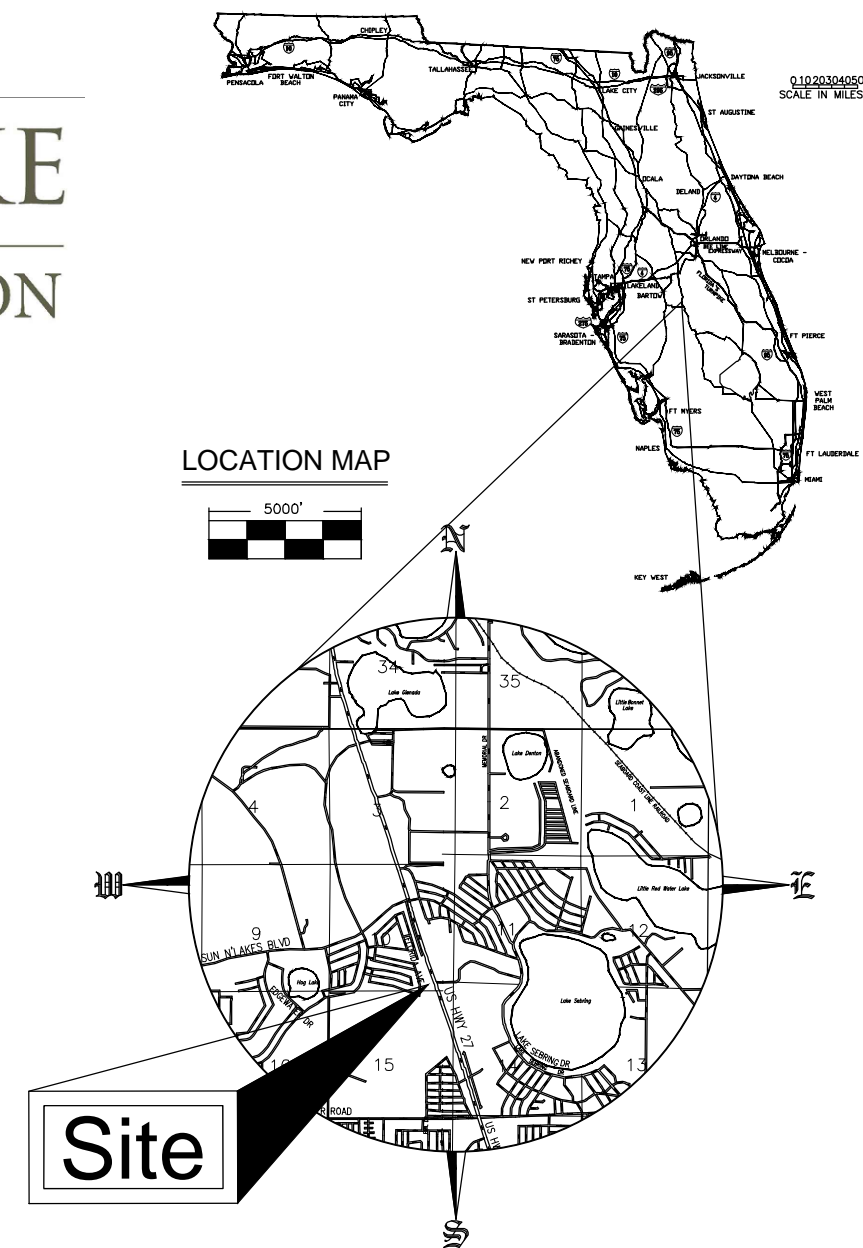


SUN 'N LAKE GOLF & RECREATION

SUN 'N LAKE OF SEBRING IMPROVEMENT DISTRICT UNIT 2 DRAINAGE IMPROVEMENTS RESIDENTIAL CULVERT CLEANING

PROJECT: UNIT 2 DRAINAGE IMPROVEMENTS
SEC. 10, TWP. 34S, RGE. 28E
(NEAR)
3765 FLORIDA AVE.
SEBRING, FL 33872

ENGINEER: ROGER DALE POLSTON, P.E.
POLSTON ENGINEERING, INC.
P.O. BOX 588
SEBRING, FL 33871-0588
(863) 385-5564
(863) 385-2462 FAX



ATTENTION IS DIRECTED TO THE FACT THAT THESE PLANS MAY HAVE BEEN ALTERED IN SIZE BY REPRODUCTION. THIS MUST BE CONSIDERED WHEN OBTAINING SCALED DATA.

ORIGINAL SIZE 11"x17"

Important:

The information and design shown on these drawings is based on the best available information provided for design. The drawing is to scale as much as possible; however no measurements should be made by scaling from these drawings as some items may be not to scale for drawing clarity. Any questions or conflicts should be brought to the engineer immediately for clarification or resolution. Polston Engineering Inc. shall not be responsible for any errors made by others caused by making assumptions about the plans or errors caused by scaling the plans. All construction shall follow the accepted safety procedures and construction techniques as required by any applicable government standards.

GENERAL NOTES:

-THE PURPOSE OF THIS PROJECT IS TO PROVIDE RESIDENTIAL CULVERT CLEANING SERVICES. SOME ROADWAY CULVERTS ARE INCLUDED IN THIS PROJECT THAT ARE ADJACENT TO THE RESIDENTIAL CULVERTS TO BE CLEANED.

-CULVERTS IN THIS AREA ARE MOSTLY HEAVILY SILTED IN AND MAY NEED SOME CLEANING IMMEDIATELY ADJACENT TO THE ENDS OF THE PIPES TO GET THE CONTRACTORS EQUIPMENT INSIDE THE PIPE. THIS CAN BE DONE WITH THE VAC TRUCK EQUIPMENT.

-THE APPROXIMATE SILT LEVEL IS DEPICTED ON THE PLAN SHEET FOR THIS PROJECT.

- ALTHOUGH MINIMAL EXPECTED IMPACT, THE CONTRACTOR IS RESPONSIBLE FOR LOCATING AND PROTECTING ALL UTILITIES AFFECTED BY THEIR WORK.

-THE CONTRACTOR WILL BE RESPONSIBLE FOR MOVING ALL MATERIAL TO THE SPECIFIED LOCATION AT THE UNIT 23 WASTE WATER TREATMENT FACILITY LOCATION. CONTRACTOR TO COORDINATE THIS WITH DISTRICT STAFF. THE APPROXIMATE LOCATION IS DEPICTED ON THE PROVIDED PLAN SHEET.

ALWAYS CALL 811 TWO FULL BUSINESS DAYS BEFORE YOU DIG

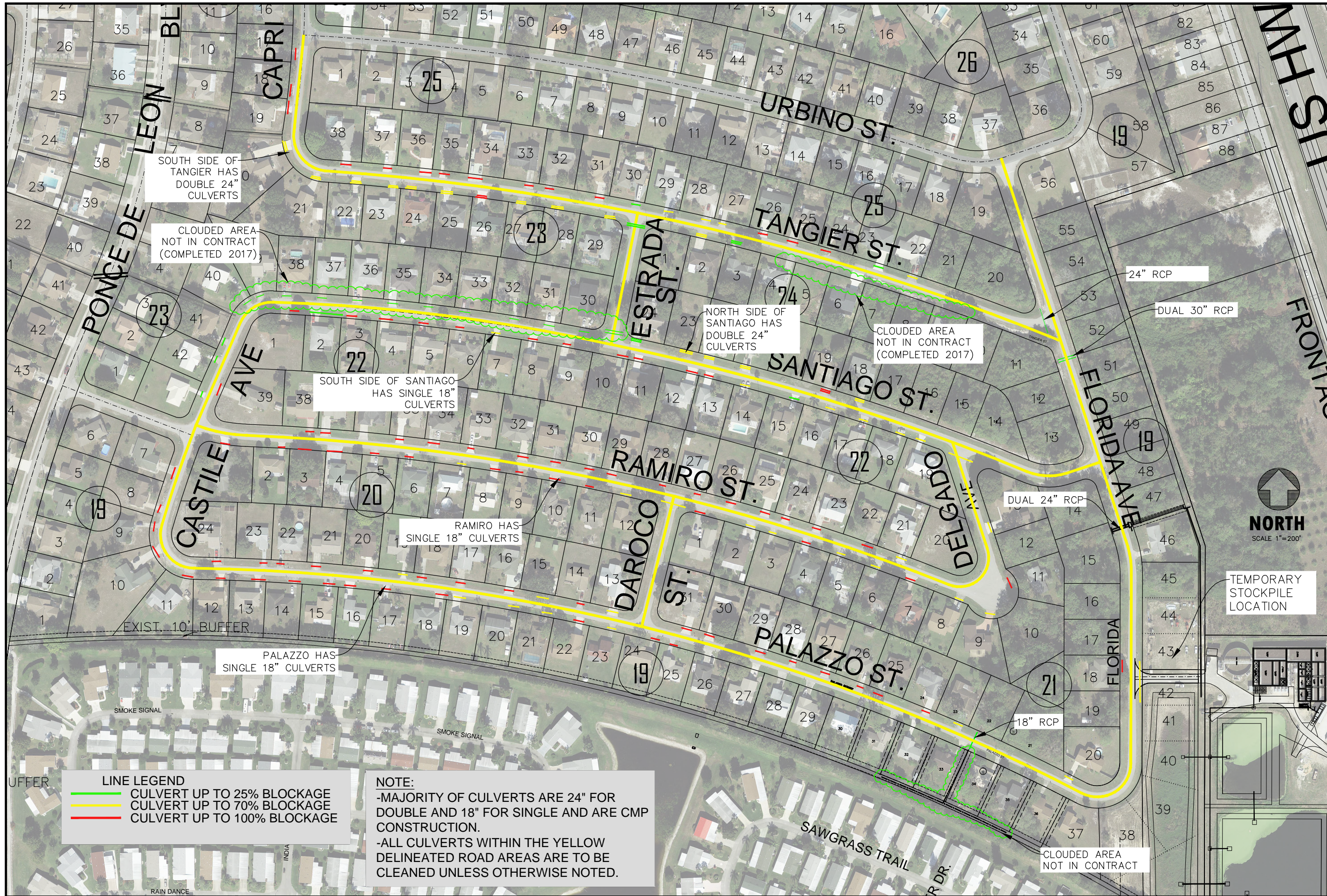


SCALE: 1" = N.T.S.	SHEET: 1 OF 2	JOB #:	16079
APPROVED BY:	02-22-18	ORIGINAL SUBMITTAL	DRJ IRDP
		DATE	REMARK
			DR CH

2925 KENILWORTH BLVD.,
SEBRING, FLORIDA 33870
863-385-5564 PHONE
863-385-2462 FAX
CERTIFICATE OF AUTHORIZATION # 5684
ROGER DALE POLSTON P. E. # 33222
MARVIN LUTHER WOLFE P. E. # 46030



**SUN 'N LAKE OF SEBRING
UNIT 2 DRAINAGE IMPROVEMENTS
PHASE 2 - RESIDENTIAL CULVERTS**



SOUTH SIDE OF TANGIER HAS DOUBLE 24" CULVERTS

CLOUDED AREA NOT IN CONTRACT (COMPLETED 2017)

SOUTH SIDE OF SANTIAGO HAS SINGLE 18" CULVERTS

NORTH SIDE OF SANTIAGO HAS DOUBLE 24" CULVERTS

CLOUDED AREA NOT IN CONTRACT (COMPLETED 2017)

RAMIRO HAS SINGLE 18" CULVERTS

PALAZZO HAS SINGLE 18" CULVERTS

LINE LEGEND

—	CULVERT UP TO 25% BLOCKAGE
—	CULVERT UP TO 70% BLOCKAGE
—	CULVERT UP TO 100% BLOCKAGE

NOTE:
 -MAJORITY OF CULVERTS ARE 24" FOR DOUBLE AND 18" FOR SINGLE AND ARE CMP CONSTRUCTION.
 -ALL CULVERTS WITHIN THE YELLOW DELINEATED ROAD AREAS ARE TO BE CLEANED UNLESS OTHERWISE NOTED.

24" RCP
 DUAL 30" RCP

DUAL 24" RCP

18" RCP



TEMPORARY STOCKPILE LOCATION

SCALE: 1"= 200'
 APPROVED BY: 02-22-18 ORIGINAL SUBMITTAL

JOB #:	16079
SHEET: 2	OF 2
DATE:	
REMARK:	
DR/J	RDP

NOT VALID UNLESS SEALED

2925 KENILWORTH BLVD.,
 SEBRING, FLORIDA 33870
 863-385-5564 PHONE
 863-385-2462 FAX
 CERTIFICATE OF AUTHORIZATION # 6884
 ROGER DALE POLSTON P. E. # 33222
 MARVIN LUTHER WOLFE P. E. # 46030



SUN 'N LAKE OF SEBRING
UNIT 2 DRAINAGE IMPROVEMENTS
PHASE 2 - RESIDENTIAL CULVERTS